

## EUROPEAN ART

John Horsewell 96-98  
Jean Kevorkian 99  
Alan Morgan 100-101  
Arthur Claridge 102-103  
Pierre Bittar 104-105  
Francois Quilici 106  
Ivars Jansons 107

## PHOTOGRAPHY

Ian M. Young 108  
Skvirsky 109  
Murray Mowat 110

# EUROPEAN ART

## John Horsewell

Born in 1952, John comes from a very artistic family. His parents and grandfather are professional artists.

Whilst still at school he became proficient in many media but now specialises in oils. On leaving school he became an interior designer but continued to paint part time. In 1978 he turned fully professional and has since gone from strength to strength. He lives with his family in Essex.



## John Horsewell

Lombardy Fields

JOH861

PAPER SIZE 700 x 725mm

IMAGE SIZE 600 x 600mm

JOH861A

PAPER SIZE 250 x 250mm

IMAGE SIZE 200 x 200mm



## John Horsewell

Summer, Aix en Provence

JOH857

PAPER SIZE 700 x 725mm

IMAGE SIZE 600 x 600mm

JOH857A

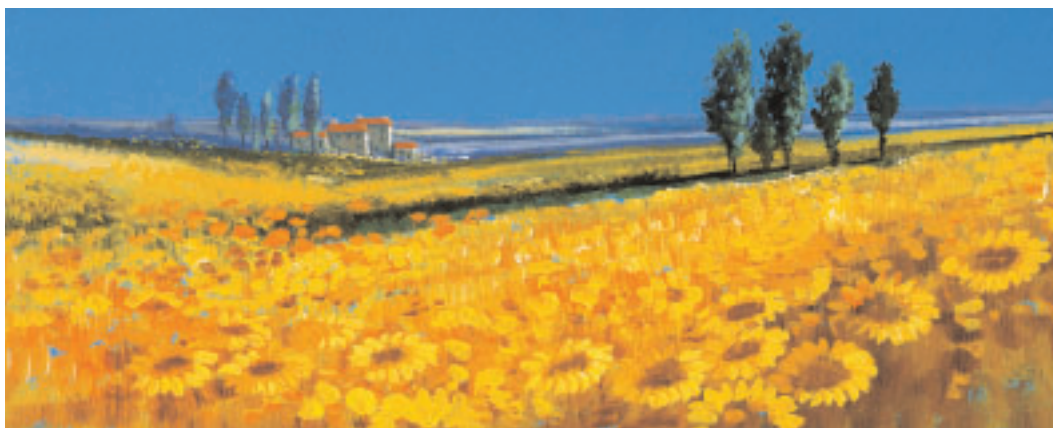
PAPER SIZE 250 x 250mm

IMAGE SIZE 200 x 200mm



**John Horsewell**  
Red Fields, Tuscany

**JOH858**  
PAPER SIZE 885 x 350mm    IMAGE SIZE 785 x 250mm  
**JOH858A**  
PAPER SIZE 395 x 160mm    IMAGE SIZE 345 x 110mm



**John Horsewell**  
Yellow Fields, Tuscany

**JOH859**  
PAPER SIZE 885 x 350mm    IMAGE SIZE 785 x 250mm  
**JOH859A**  
PAPER SIZE 395 x 160mm    IMAGE SIZE 345 x 110mm



**John Horsewell**  
Blue Fields, Tuscany

**JOH860**  
PAPER SIZE 885 x 350mm    IMAGE SIZE 785 x 250mm  
**JOH860A**  
PAPER SIZE 395 x 160mm    IMAGE SIZE 345 x 110mm

**John Horsewell**  
Spring, Aix en Provence  
JOH856  
PAPER SIZE 700 x 725mm  
IMAGE SIZE 600 x 600mm  
JOH856A  
PAPER SIZE 250 x 250mm  
IMAGE SIZE 200 x 200mm



**John Horsewell**  
Lombardy Villa  
JOH862  
PAPER SIZE 700 x 725mm  
IMAGE SIZE 600 x 600mm  
JOH862A  
PAPER SIZE 250 x 250mm  
IMAGE SIZE 200 x 200mm





**Jean Kevorkian**  
 Poplars in Poitevin Marsh  
**EJK930**  
 PAPER SIZE 765 x 650mm  
 IMAGE SIZE 665 x 550mm  
**EJK930A**  
 PAPER SIZE 235 x 200mm  
 IMAGE SIZE 200 x 165mm



**Jean Kevorkian**  
 Bridge at Ashford in the Water, Derbyshire  
**EJK931**  
 PAPER SIZE 765 x 650mm  
 IMAGE SIZE 665 x 550mm  
**EJK931A**  
 PAPER SIZE 235 x 200mm  
 IMAGE SIZE 200 x 165mm

## Jean Kevorkian

Jean Kevorkian a true Parisian, was born in 1933 and has always loved his native Paris although preferring as inspiration for his impressionist works, the timeless beauty of provincial France.

Jean concentrates his endeavours on interpreting - as did the master impressionists preceding him - the four seasons, glowing hills and valleys, sparkling streams with distant villages, sun-drenched beaches and endless changing skies.

To view paintings by Kevorkian is sufficient to comprehend his ability and to understand immediately why his paintings appeal to countless buyers.



**Jean Kevorkian**  
 Mermaid Street, Rye  
**EJK929**  
 PAPER SIZE 650 x 765mm  
 IMAGE SIZE 550 x 655mm  
**EJK929A**  
 PAPER SIZE 235 x 200mm  
 IMAGE SIZE 200 x 165 mm



**Jean Kevorkian**  
 Street in Matlock, Derbyshire  
**EJK928**  
 PAPER SIZE 650 x 765mm  
 IMAGE SIZE 550 x 655mm  
**EJK928A**  
 PAPER SIZE 235 x 200mm  
 IMAGE SIZE 200 x 165 mm

# EUROPEAN ART



## Alan Morgan

Alan is a full time artist living in the beautiful county of Herefordshire and Powys. Born in 1952 he graduated from Coventry (Lanchester) Art College with BA Honours in Fine Art. His professional career has since focused mainly on realist landscape painting although he has enjoyed considerable success as an illustrator. He recently extended his style to encompass a more "colourist" approach in much of his work.

The basis of his inspiration is his love of light, colour and atmosphere in landscape. Influences in Alan's paintings are varied and include the Preraphaelites, Fauvists and Impressionists.

## Alan Morgan

Hillside Village, Tuscany

EAL378

PAPER SIZE 700 x 725mm

IMAGE SIZE 600 x 600mm

EAL378A

PAPER SIZE 250 x 250mm

IMAGE SIZE 200 x 200mm



## Alan Morgan

Lavender Fields, Provence

EAL377

PAPER SIZE 700 x 725mm

IMAGE SIZE 600 x 600mm

EAL377A

PAPER SIZE 250 x 250mm

IMAGE SIZE 200 x 200mm





**Alan Morgan**  
Flowers and Fruit

**EAL379**

PAPER SIZE 700 x 725mm

IMAGE SIZE 600 x 600mm

**EAL379A**

PAPER SIZE 250 x 250mm

IMAGE SIZE 200 x 200mm



**Alan Morgan**  
Flowers and Vase

**EAL380**

PAPER SIZE 700 x 725mm

IMAGE SIZE 600 x 600mm

**EAL380**

PAPER SIZE 250 x 250mm

IMAGE SIZE 200 x 200mm



**Alan Morgan**  
Still Life Study 1

**EAL381**

PAPER SIZE 650 x 500mm

IMAGE SIZE 550 x 400mm



**Alan Morgan**  
Still Life Study 2

**EAL382**

PAPER SIZE 650 x 500mm

IMAGE SIZE 550 x 400mm



**Alan Morgan**  
Still Life Study 3

**EAL383**

PAPER SIZE 650 x 500mm

IMAGE SIZE 550 x 400mm



**Alan Morgan**  
Still Life Study 4

**EAL384**

PAPER SIZE 650 x 500mm

IMAGE SIZE 550 x 400mm

# EUROPEAN ART

## Arthur Claridge

Born in Campbeltown, Argyllshire, he studied at RSA (Royal Scottish Academy) schools and settled in Edinburgh for the rest of his life. A painter of expansive landscapes and seascapes he is best known for his work in oils but he was also a watercolourist of some merit. He was elected to the RSA in 1918.



**Arthur Claridge**  
Stone Bridge, Tuscany

**ECL443**  
PAPER SIZE 500 x 760mm IMAGE SIZE 400 x 660mm

**ECL443A**  
PAPER SIZE 200 x 300mm IMAGE SIZE 150 x 250mm



**Arthur Claridge**  
Winding Path, Tuscany

**ECL444**  
PAPER SIZE 500 x 760mm IMAGE SIZE 400 x 660mm

**ECL444A**  
PAPER SIZE 200 x 300mm IMAGE SIZE 150 x 250mm





**Arthur Claridge**  
Poppies and Cypress Trees

**ECL400**

PAPER SIZE 700 x 725mm

IMAGE SIZE 600 x 600mm

**ECL400A**

PAPER SIZE 250 x 250mm

IMAGE SIZE 170 x 170mm



**Arthur Claridge**

Rhapsody in Red Tuscany

**ECL401**

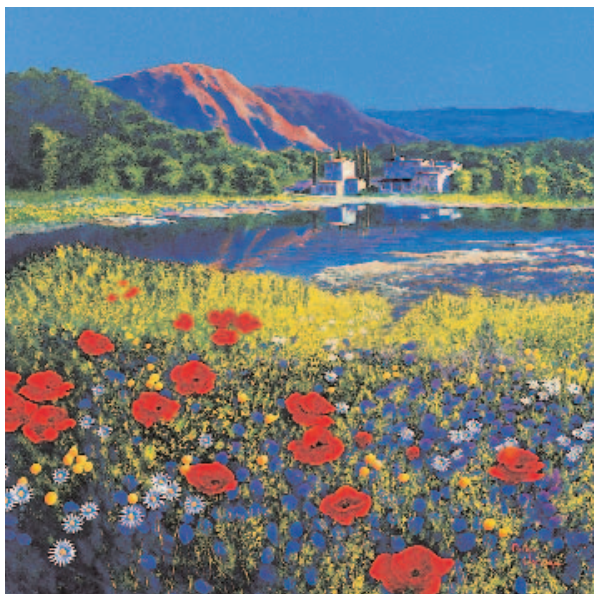
PAPER SIZE 700 x 725mm

IMAGE SIZE 600 x 600mm

**ECL401A**

PAPER SIZE 250 x 250mm

IMAGE SIZE 170 x 170mm



**Arthur Claridge**

Lakeside Villas

**ECL402**

PAPER SIZE 700 x 725mm

IMAGE SIZE 600 x 600mm

**ECL402A**

PAPER SIZE 250 x 250mm

IMAGE SIZE 170 x 170mm



**Arthur Claridge**

River of Dreams

**ECL403**

PAPER SIZE 700 x 725mm

IMAGE SIZE 600 x 600mm

**ECL403A**

PAPER SIZE 250 x 250mm

IMAGE SIZE 170 x 170mm

# EUROPEAN ART

## Pierre Bittar

Born in France, Bittar is renowned for his Impressionist oil paintings. He was originally a sales instructor in Switzerland but gradually his painting took over and in 1980 he left his job after 24 years to concentrate on his art. He has never looked back and has travelled the world. A limited edition book on his life was published in 1986 and was eagerly snapped up by collectors. He has won the Albrecht Durer Prize and The Paris Salon Gold Medal.



## Pierre Bittar

Lake Como

EPB164

PAPER SIZE 750 x 650mm

IMAGE SIZE 650 x 520mm

EPB164A

PAPER SIZE 275 x 250mm

IMAGE SIZE 215 x 175mm



## Pierre Bittar

La Plage

EPB166

PAPER SIZE 750 x 650mm

IMAGE SIZE 650 x 520mm

EPB166A

PAPER SIZE 275 x 250mm

IMAGE SIZE 215 x 175mm



**Pierre Bittar**

Two Bays

EPB165

PAPER SIZE 750 x 650mm

IMAGE SIZE 650 x 520mm

EPB165A

PAPER SIZE 275 x 250mm

IMAGE SIZE 215 x 175mm



**Pierre Bittar**

Geraniums at Villefranche

EPB163

PAPER SIZE 750 x 650mm

IMAGE SIZE 650 x 520mm

EPB163A

PAPER SIZE 275 x 250mm

IMAGE SIZE 215 x 175mm

# EUROPEAN ART

## Francois Quilici

Born in 1939 in Eastern France of Corsican parents, Quilici has been a professional painter for many years. He describes his work as "artistic alchemy" and specialises in figures and landscapes. He exhibits all year round in several top Paris Galleries.



## Francois Quilici

The Offering

EFQ914

PAPER SIZE 550 x 765mm

IMAGE SIZE 450 x 640mm

EFQ914A

PAPER SIZE 215 x 290mm

IMAGE SIZE 155 x 220mm



## Francois Quilici

Alone

EFQ915

PAPER SIZE 550 x 765mm

IMAGE SIZE 450 x 640mm

EFQ915A

PAPER SIZE 215 x 290mm

IMAGE SIZE 155 x 220mm



## Francois Quilici

Angel Hair

EFQ916

PAPER SIZE 550 x 765mm

IMAGE SIZE 450 x 640mm

EFQ916A

PAPER SIZE 215 x 290mm

IMAGE SIZE 155 x 220mm



## Francois Quilici

Light of the Earth

EFQ917

PAPER SIZE 550 x 765mm

IMAGE SIZE 450 x 640mm

EFQ917A

PAPER SIZE 215 x 290mm

IMAGE SIZE 155 x 220mm



**Ivars Jansons**  
Summer's Morning

EJA215

PAPER SIZE 750 x 600mm

IMAGE SIZE 650 x 480mm

EJA215A

PAPER SIZE 250 x 200mm

IMAGE SIZE 215 x 160mm



**Ivars Jansons**  
Trivial Pursuits

EJA216

PAPER SIZE 750 x 600mm

IMAGE SIZE 650 x 480mm

EJA216A

PAPER SIZE 250 x 200mm

IMAGE SIZE 215 x 160mm

## Ivars Jansons

It is his romantic subject matter and superb palette knife technique that have earned him the reputation and following he so richly deserves. Equally at home with either oils or watercolours, he was one of three artists to represent Australia at The Hague in 1984.

Ivars Jansons was born in Latvia in 1939 and emigrated to Australia under the eminent Newly artist Leonard Fuller. In 2003 Jansons was awarded first prize in the highly prestigious Camberwell Art Show.



**Ivars Jansons**  
Late Afternoon, Venice

EJA217

PAPER SIZE 750 x 600mm

IMAGE SIZE 650 x 480mm

EJA217A

PAPER SIZE 250 x 200mm

IMAGE SIZE 215 x 160mm



**Ivars Jansons**  
Autumn Haze, Venice

EJA218

PAPER SIZE 580 x 770mm

IMAGE SIZE 480 x 650mm

EJA218A

PAPER SIZE 200 x 250mm

IMAGE SIZE 160 x 215mm

# PHOTOGRAPHY

## Ian M. Young

Born in Glasgow in 1946, Ian is a graduate of London and Glasgow Universities. He is an Edinburgh based photographer whose work has been showcased in publications such as "Scottish Field" and "The Scotsman". His work is exhibited in The Bank of Scotland and in private collections in the USA and Europe. Ian's training in ecology has helped develop a fine detail which is reflected in his evocative landscapes.



## Ian M. Young Eilean Donan Castle

EIY927

PAPER SIZE 600 x 525mm

IMAGE SIZE 500 x 400mm

EIY927A

PAPER SIZE 300 x 260mm

IMAGE SIZE 250 x 200mm

## Ian M. Young Edinburgh Nights

EIY926

PAPER SIZE 550 x 575mm

IMAGE SIZE 450 x 450mm

EIY926A

PAPER SIZE 250 x 250mm

IMAGE SIZE 192 x 192mm





**Skvirsky**  
Deco Folio 1  
**SKV880**  
PAPER SIZE 500 x 700mm  
IMAGE SIZE 400 x 500mm



**Skvirsky**  
Deco Folio 2  
**SKV881**  
PAPER SIZE 500 x 700mm  
IMAGE SIZE 400 x 500mm



**Skvirsky**  
Deco Folio 3  
**SKV882**  
PAPER SIZE 500 x 700mm  
IMAGE SIZE 400 x 500mm



**Skvirsky**  
Deco Folio 4  
**SKV883**  
PAPER SIZE 500 x 700mm  
IMAGE SIZE 400 x 500mm

# PHOTOGRAPHY

---



**Murray Mowat**  
Loch Katrine

**MM0841**  
PAPER SIZE 890 x 350mm IMAGE SIZE 790 x 250mm



**Murray Mowat**  
Towards Rannoch Moor

**MM0840**  
PAPER SIZE 890 x 350mm IMAGE SIZE 790 x 250mm



**Murray Mowat**  
The Trossachs

**MM0838**  
PAPER SIZE 890 x 350mm IMAGE SIZE 790 x 250mm



**Murray Mowat**  
Loch Lomond

**MM0837**  
PAPER SIZE 890 x 350mm IMAGE SIZE 790 x 250mm